

# Users manual

© 2007 ... Stonisa Software

# Table of Contents

Foreword	0
<b>Part I Driver's License Tests</b>	<b>1</b>
<b>Part II Using DLT</b>	<b>1</b>
<b>Part III Groups of questions</b>	<b>2</b>
1 Situations and theory .....	2
2 Intersections .....	3
3 Road signs .....	4
<b>Part IV Registration</b>	<b>5</b>
Index	0

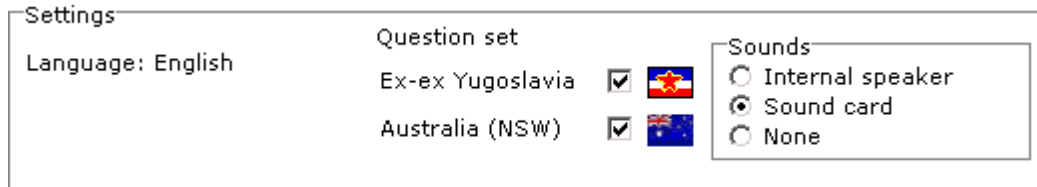
# 1 Driver's License Tests

This is standard Windows software designed to help drivers get better understanding of sometimes tricky traffic situations. DLT was originally developed as a tool for preparing the driving exam test in former Yugoslavia but it is fully translated into English now and has questions for Australia added later on.

It will run well on every PC with any version of 32-bit Windows (98 and up). No additional software packages or components are needed. Database is flat file, so you don't have to worry about additional configuring of your system. Setting is as easy as DLT itself

# 2 Using DLT

You start DLT as any other Windows application. Clicking on Desktop Icon or from Tripper-IT start menu group.



You will need to set up language for the interface and questions (two languages are supported, English and Ex-Ex-Yu = Serbo-Croatian), the group of questions you want to see (ExEx Yugoslav and Australian, marked with country flags) and what sounds you want to here.

You can switch to another language by clicking on the label and restarting the program. You choose your language during first start of the program. DLT can use internal built-in computer speaker (or better say beeper) and sound card with external speakers. Or it may be silent though. This is very easy to set and comes into effect immediately.

## Walking through questions

You can scroll through questions randomly or sequentially. For this you can use buttons that you see at the right corner of every page.



Number you see on the button is the overall number of answers that is left for you to answer in the selected categories of questions (Australian or Yugoslav or both).

## Statistics

DLT tracks all your answering actions in program. This statistics shows you how many times you have viewed, answered correctly or wrong every particular question. This statistics is a way of

letting you have an insight in your overall learning progress. You can see the current session and overall statistics as well.

Statistics						
	Answered	right	wrong	Answered	right	wrong
Situations:	2	2	0	26	6	7
Theory:	2	1	1	4	1	1
Crossroads:	1	0	1	7	0	1
Road signs:	1	0	1	2	0	1

Reset

First three columns are for current session and next three columns are overall figures. Overall statistics could be reset (annulled) at any time by clicking Reset button.

### 3 Groups of questions

Clicking on any of buttons to the left leads you to the particular group of questions immediately. You can switch between groups any time you want.



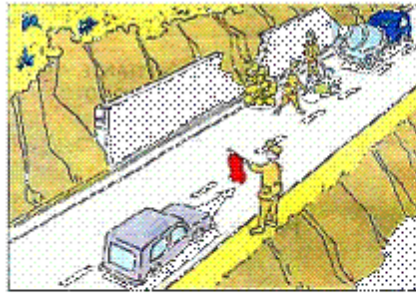
#### 3.1 Situations and theory

Situations are questions about particular traffic situations that are depicted in description text and accompanied by picture. The several options are offered (usually three) as answer and only one of them is correct.

##### Answering

Just click on the answer that you consider correct. If you are right then you are taken to the next question automatically. If you made an error you will hear an audible signal than your wrong answer will be marked with red x, another wrong answer disappears and the only one left standing is the correct answer.

So you can see the error and solution very clear thus helping you learn and if you answered correctly you will not be slowed down more than really necessary.



Sign shown on the picture given by the red flag in lifted hands means:

compulsory stop for all vehicles coming toward the flag

speed should be additionally decreased on the part of the road where works are being done

If you made an error you must use the buttons at the right corner for walking through questions to get next question. This will not happen automatically.

## Theory

Theory questions are different from situations only in that they are not accompanied by the picture. Answering, walking through questions and other operations are identical.

Carbon monoxide is poisonous gas that inflicts with driving capabilities adversely. It is produced in the cabin because of:

smoking

higher temperature in the vehicle

## 3.2 Intersections

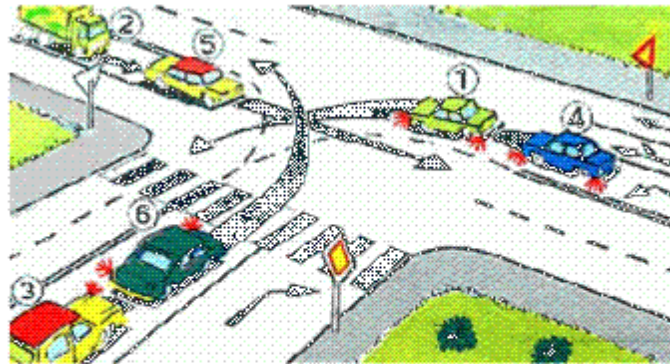
Crossroads are questions about right of way in particular traffic situations happening on crossroads. All relevant vehicles are marked with numbers, and the solution of the problem is the string of numbers that represent the correct order in which the vehicles must pass the crossroad. Off-course, only one order is right and all others are wrong.

## Answering

Just click on the number buttons below in the order that you consider right for vehicles to cross the crossroad. When you click the button it disappears. If you have made mistake than you could click on the left arrow button at the right side. Every click on it cancels click you made last. When you have clicked all the buttons then if you guessed right than you go to the next crossroad but if you made mistake, audible signal sounds and wrong guess is replaced with correct order written below in red.



So you can see the error and solution very clear thus helping you learn and if you answered correctly you will not be slowed down more than really necessary.



521452  
5214

If you made an error you must use the buttons at the right corner for walking through questions to get next question. This will not happen automatically.

## 3.3 Road signs

These questions are designed to check your knowledge of road signs. In upper part of the picture there are 12 road signs and at the bottom there are 8 descriptions. Every description has a sign above to correspond to it, but 4 signs do not have a pair. They are here only to confuse you. Your task is to connect signs and description by their meaning. Answering

You must make eight pairs of road signs and its correct description. There are 12 signs and only 8 descriptions, so every description has a sign but not every sign has its description. You make pairs clicking on the sign and then on the description you think it is right or other way. If you change your mind you can switch to another sign but pair is considered finished when you select both sign and description. Then if you guess right both sign and description disappears from the screen and you continue until last description get his sign. Any mistake in the process of making pairs makes the whole answer treated as wrong.



Minimal speed that vehicles must drive with in normal conditions.

Prohibition of stepping into narrowed road part before the vehicles in opposite direction pass by.

Proximity of dangerous bulge and dent of the road.

Traffic prohibition for vehicles with overall weight exceeding 5 t.

Direction table on the spot where the road approaches sharp left turn.

Speed limit equals 60 km/h.

Traffic prohibition for motor vehicles that tows trailer except semi-trailer.

Road number marking.

So you can see the error and solution very clear thus helping you learn and if you answered correctly you will not be slowed down more than really necessary.

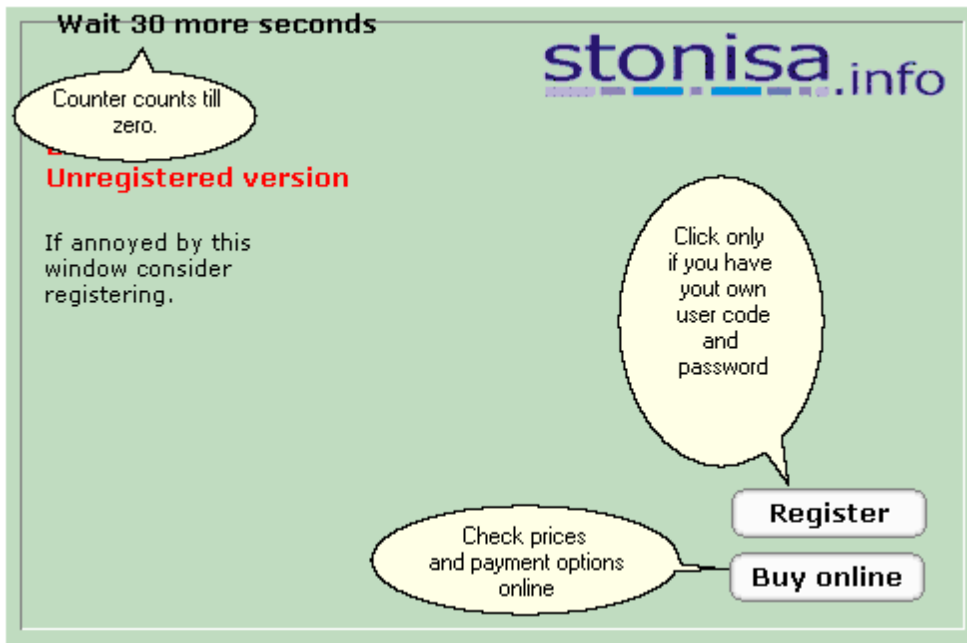
If you made an error you must use the buttons at the right corner for walking through questions to get next question. This will not happen automatically.

## 4 Registration

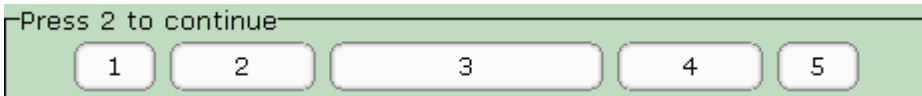
*DLT is not free software, although you can use it without paying any license.*

*DLT is **annoyware**.*

Until registered, it will continue to annoy you on every startup with a nag screen, you have to wait for some time (5 to 60 seconds, at random) and that click on the correct number to be allowed to enter.



After counter reaches zero, press correct button and you will enter the program.



If you miss the right button (2) DLT will close.

When you decide that time has come to buy the software, pay the license fee (very affordable) using some of the supported paying modes.

When you register this software you will get user code and password that you will use to register one or more copies of the product.

User code:	<input type="text" value="stonui"/>	
Full name:	<input type="text" value="Toni Stojev"/>	
E-mail address:	<input type="text" value="stonisa@yahoo.com"/>	
Password:	<input type="password"/>	
Reg. Code:	<input type="text"/>	<input type="button" value="Get code online"/>
BIOS code:	<input type="text" value="957fc6658cc4371bcbe2306b1680549f"/>	
<input type="button" value="Cancel"/> <input type="button" value="OK"/>		

---

Keep user code and password secret, because anyone that has the knowledge of them can use them to register DLT on any other computer using your codes (codes are limited).

Registered codes are memorized in the file `dlt.conf` that is located in the same folder as DLT executable.

For a pricing, license options and other info visit its [home site](#).